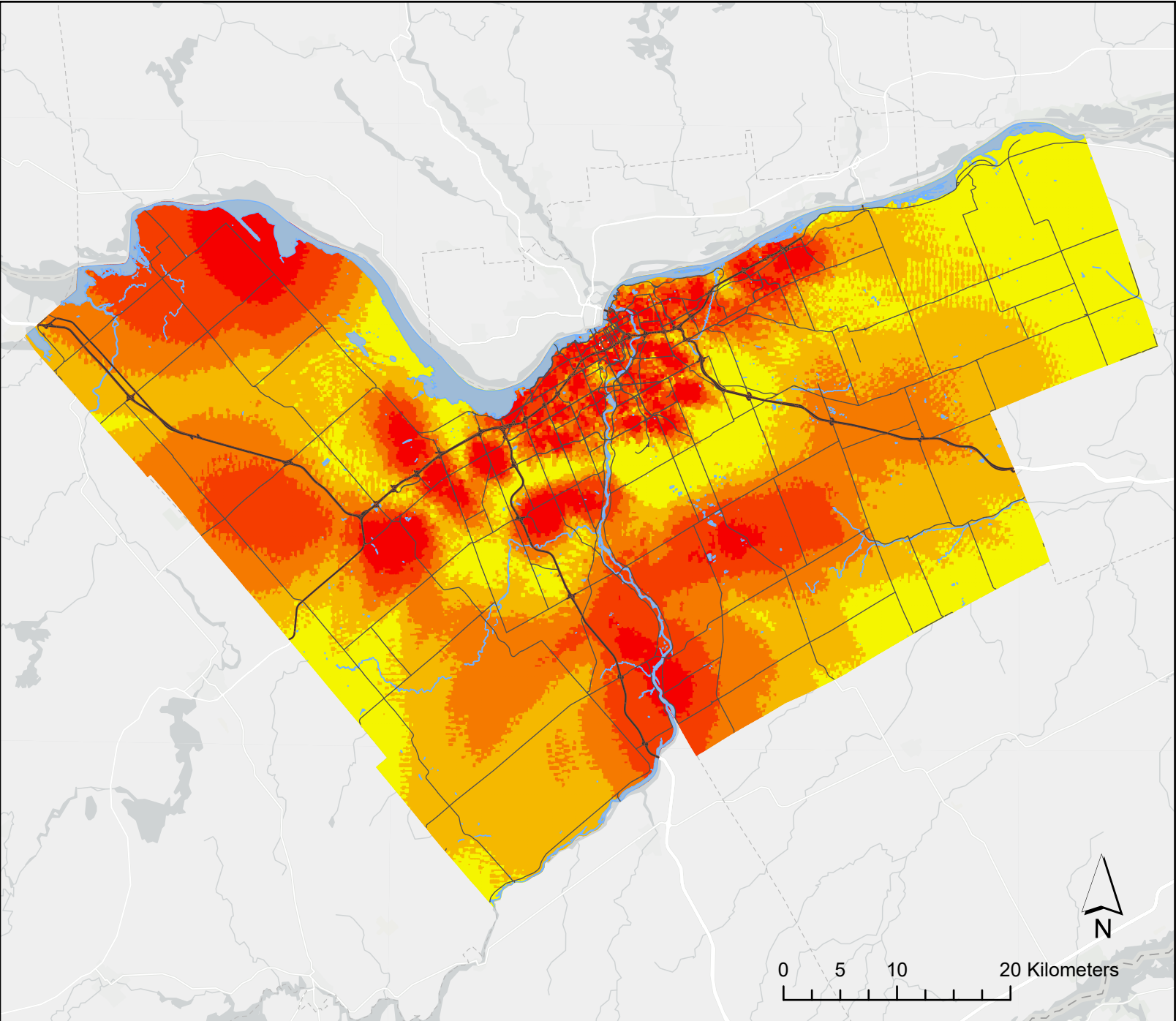


Break and Enters in Ottawa (2005-2006)

Using Single Kernel Density Analysis



Single Kernel Density Estimate

- ≤0.028460
- ≤0.036099
- ≤0.044657
- ≤0.054820
- ≤0.088769

Other Attributes

- Waterbodies
- Highways
- Main roads

Christy Chin 13671169
GEOB 479
03-20-20
Source: Ottawa Police
Department, UBC data
Projection: NAD 1983 UTM
Zone 18N

