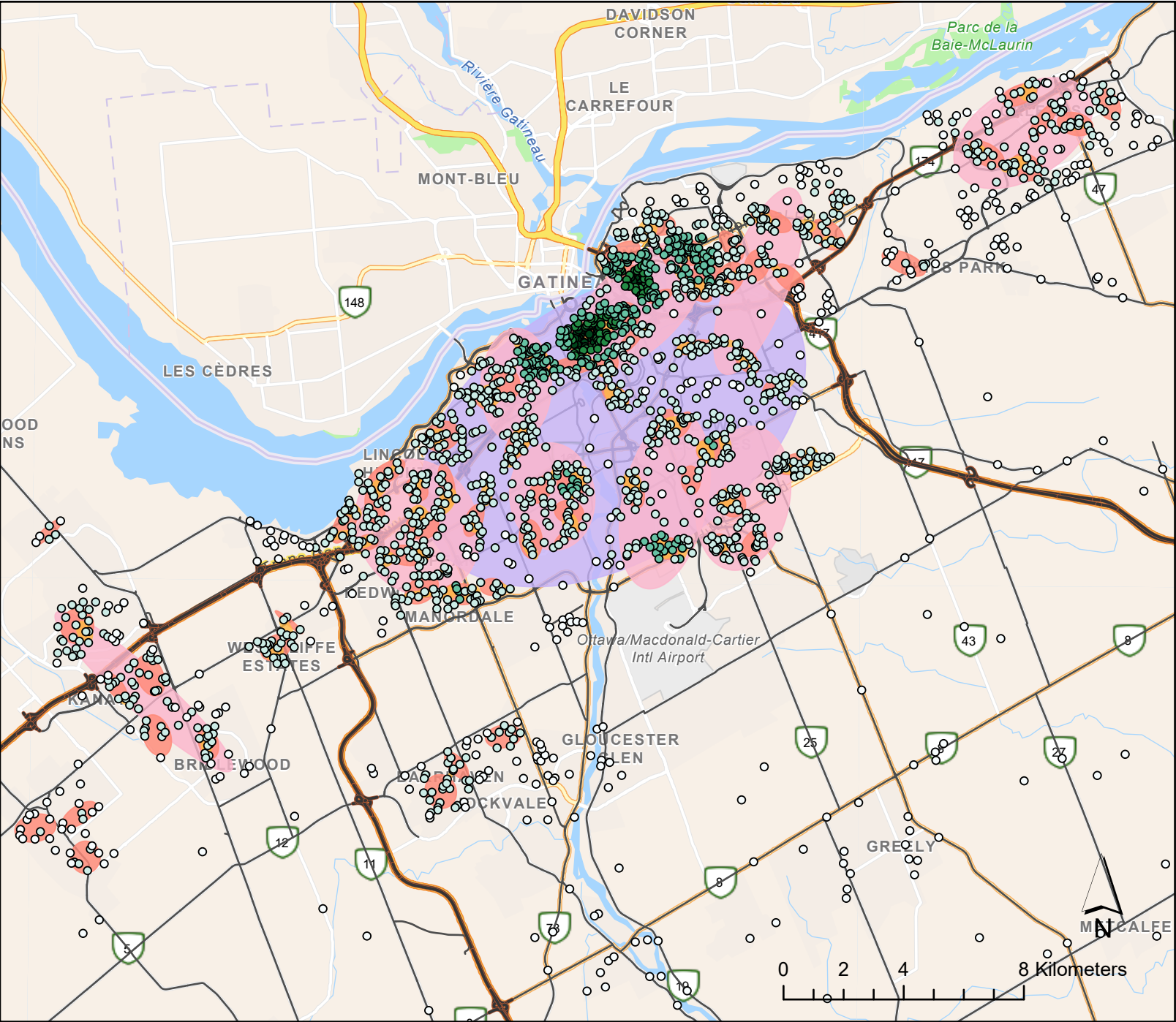


Break and Enters in Ottawa (2005-2006)

Nearest Neighbourhood Hierarchical Spatial Clustering



Break & Enter Frequency

- 1-10
- 10-50
- 50-100
- 100-150
- 150-184

Nearest Neighbour Clusters

- 1st Order Clusters
- 2nd Order Clusters
- 3rd Order Clusters

Other Attributes

- Highways
- Main roads

Christy Chin 13671169
GEOB 479
03-20-20
Source: Ottawa Police
Department, UBC data
Projection: NAD 1983 UTM
Zone 18N