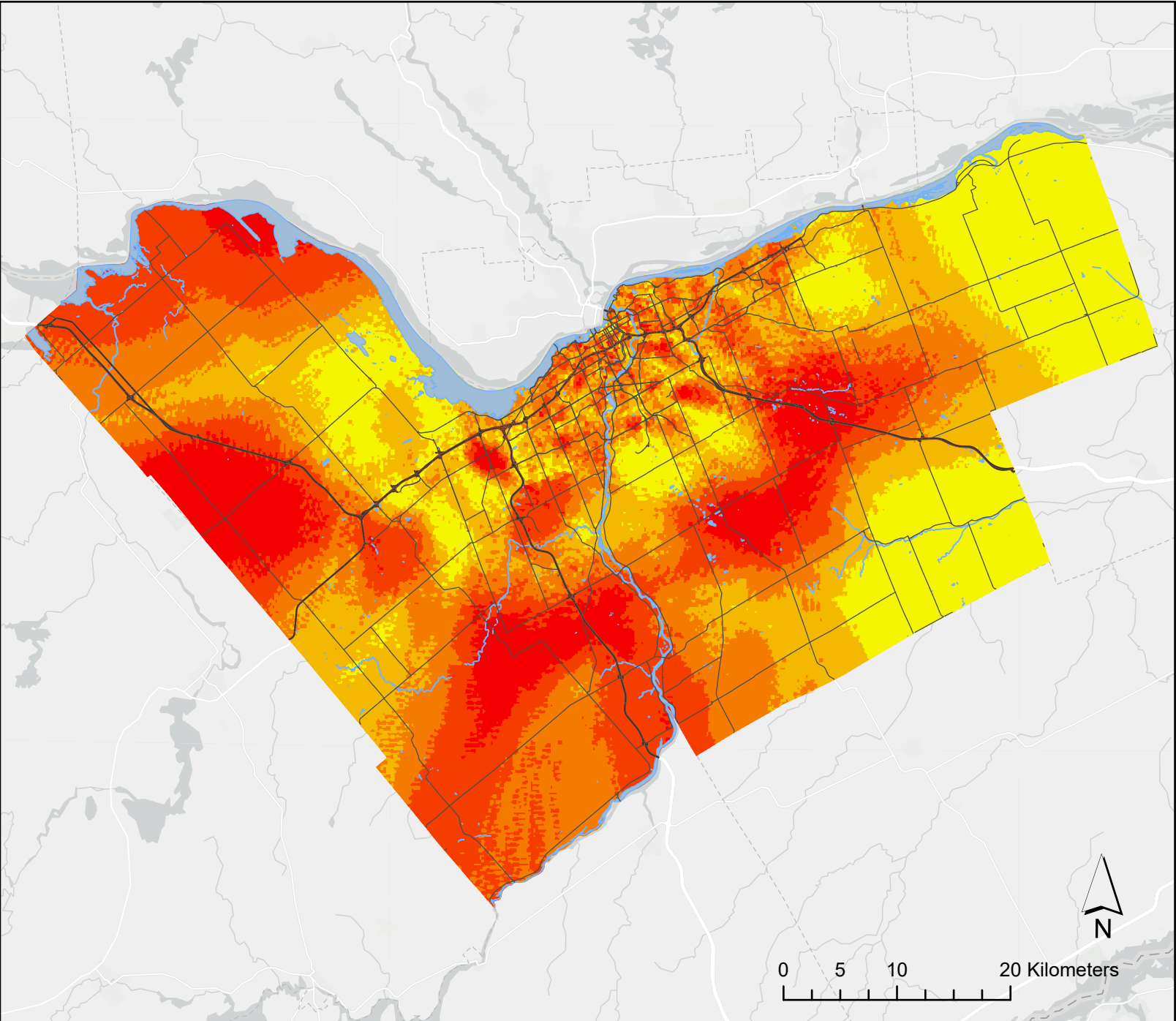


Break and Enters in Ottawa (2005-2006)

Using Dual Kernel Density Analysis



Dual Kernel Density Estimate

- ≤0.003183
- ≤0.004228
- ≤0.005286
- ≤0.006543
- ≤0.009313

Other Attributes

- Waterbodies
- Highways
- Main roads

Christy Chin 13671169
GEOB 479
03-20-20
Source: Ottawa Police
Department, UBC data
Projection: NAD 1983 UTM
Zone 18N