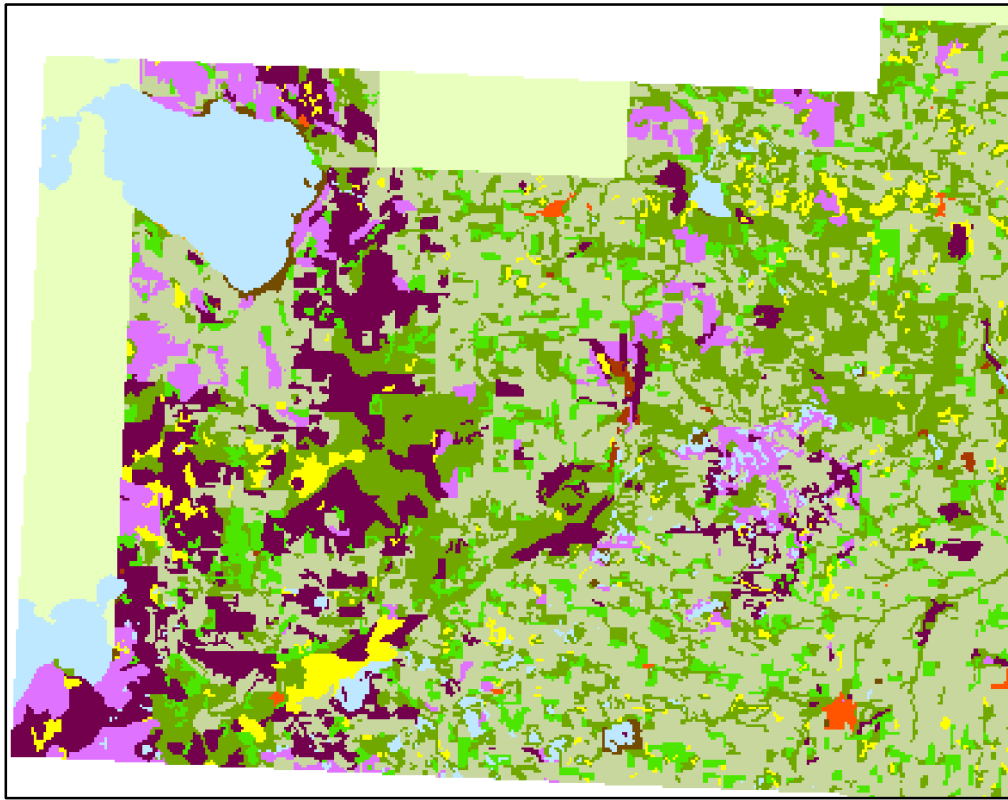
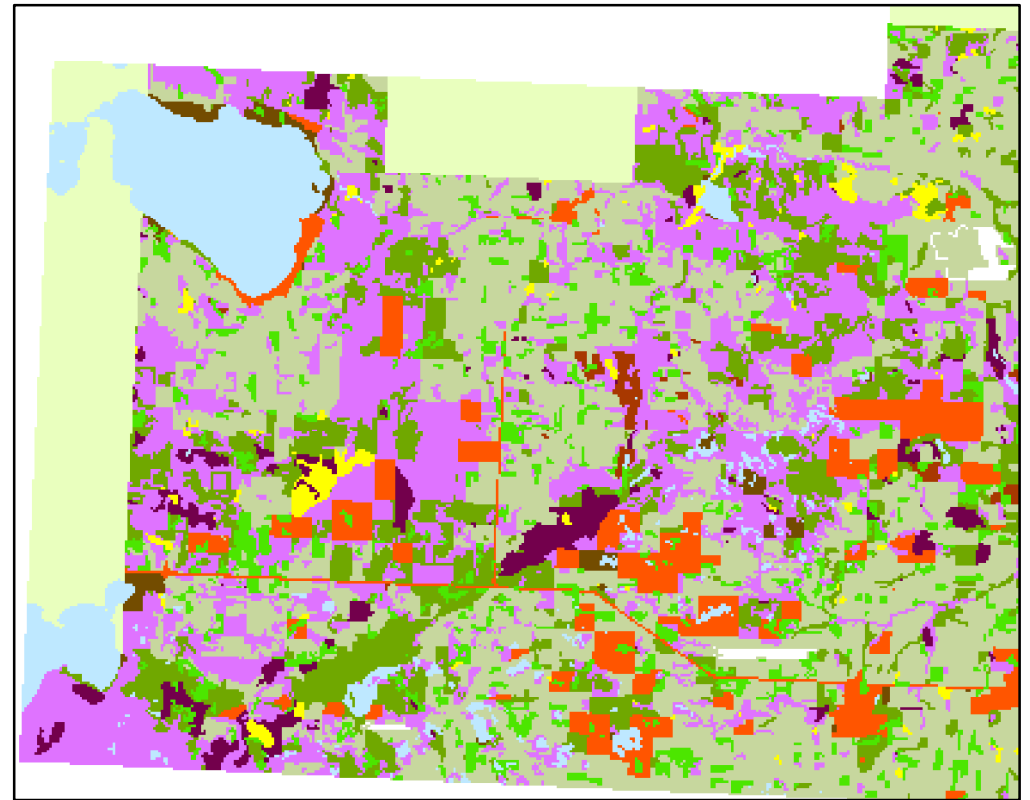


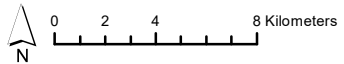
Land Productivity in Edmonton, Alberta (1966 -1976)



1966 (1:300,000)



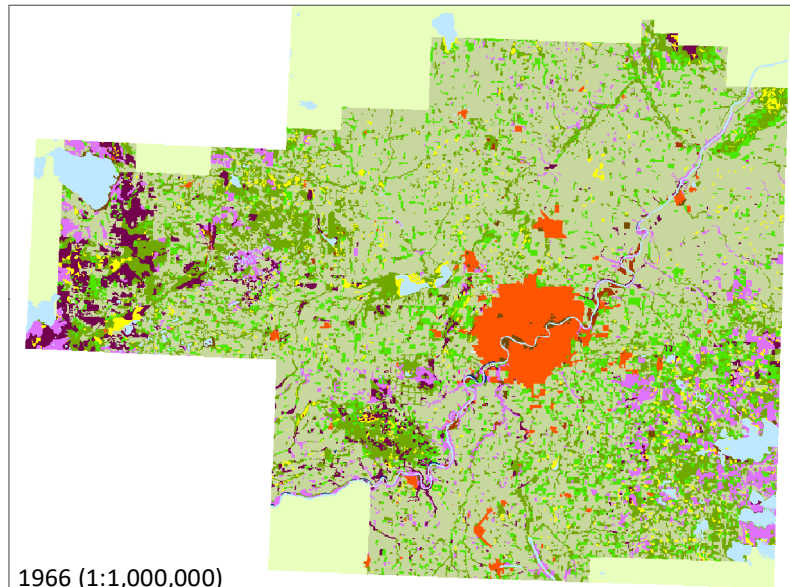
1976 (1:300,000)



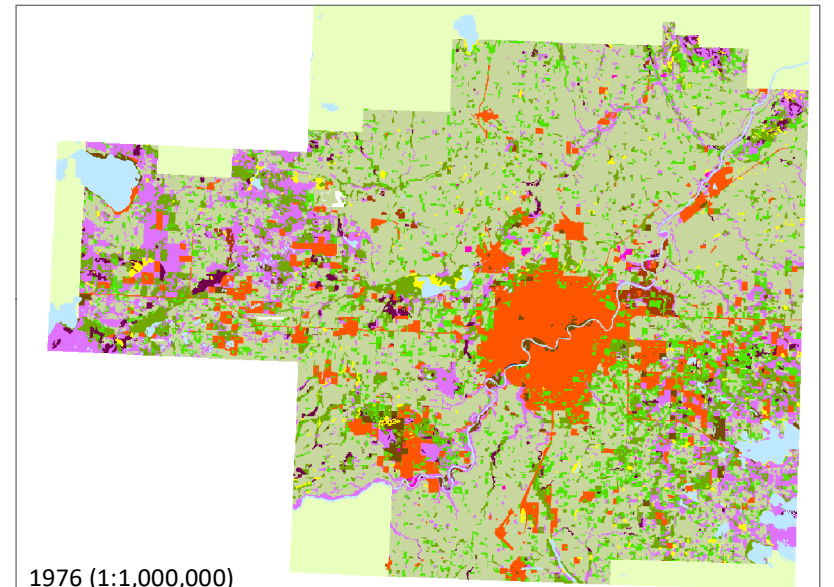
Land Use

- Cropland
- Horticulture
- Improved pasture and forage crops
- Mines quarries sand and gravel pits
- Non-productive woodland
- Outdoor recreation
- Productive woodland
- Swampmarsh or bog
- Unimproved pasture and range land
- Unmapped areas
- Unproductive landrock
- Unproductive landsand
- Urban built-up area
- Water areas

Christy Chin 13671169
 GEOB 479
 01-01-20
 Source: Open Government Portal
 Projection: NAD 1927 UTM Zone 12N



1966 (1:1,000,000)



1976 (1:1,000,000)